



AUCKLAND CLASSIC Finals



Oil Pattern Distance:	40 Feet	Reverse Brush Drop:	33 Feet	Oil Per Board:	50 uL
Forward Oil Total:	17.9 mL	Reverse Oil Total:	11.05 mL	Volume Oil Total:	28.95 mL
Forward Boards Crossed:	358 Boards	Reverse Boards Crossed:	221 Boards	Total Boards Crossed:	579 Boards

	Start	Stop	Loads	Speed	Crossed	Start	End	Feet	T.Oil
1	2L	2R	3	14	111	0.0	3.9	3.9	5550
2	4L	4R	1	14	33	3.9	5.8	1.9	1650
3	6L	6R	1	14	29	5.8	7.7	1.9	1450
4	8L	8R	1	18	25	7.7	10.2	2.5	1250
5	9L	9R	2	18	46	10.2	15.3	5.1	2300
6	10L	10R	2	22	42	15.3	21.5	6.2	2100
7	11L	11R	2	22	38	21.5	27.7	6.2	1900
8	12L	12R	2	22	34	27.7	33.9	6.2	1700
9	2L	2R	0	22	0	33.9	37.0	3.1	0
10	2L	2R	0	26	0	37.0	40.0	3.0	0

Forward Reverse More

	Start	Stop	Loads	Speed	Crossed	Start	End	Feet	T.Oil
1	2L	2R	0	30	0	40.0	30.0	-10.0	0
2	12L	12R	1	26	17	30.0	26.4	-3.6	850
3	11L	11R	1	22	19	26.4	23.3	-3.1	950
4	10L	10R	2	18	42	23.3	18.2	-5.1	2100
5	9L	9R	2	18	46	18.2	13.1	-5.1	2300
6	6L	6R	1	14	29	13.1	11.2	-1.9	1450
7	5L	5R	1	14	31	11.2	9.3	-1.9	1550
8	2L	2R	1	14	37	9.3	7.4	-1.9	1850
9	2L	2R	0	10	0	7.4	0.0	-7.4	0

Forward Reverse More

Conditioner:
Type In or Select
One

TransferType:
Type In or Select
One

Forward



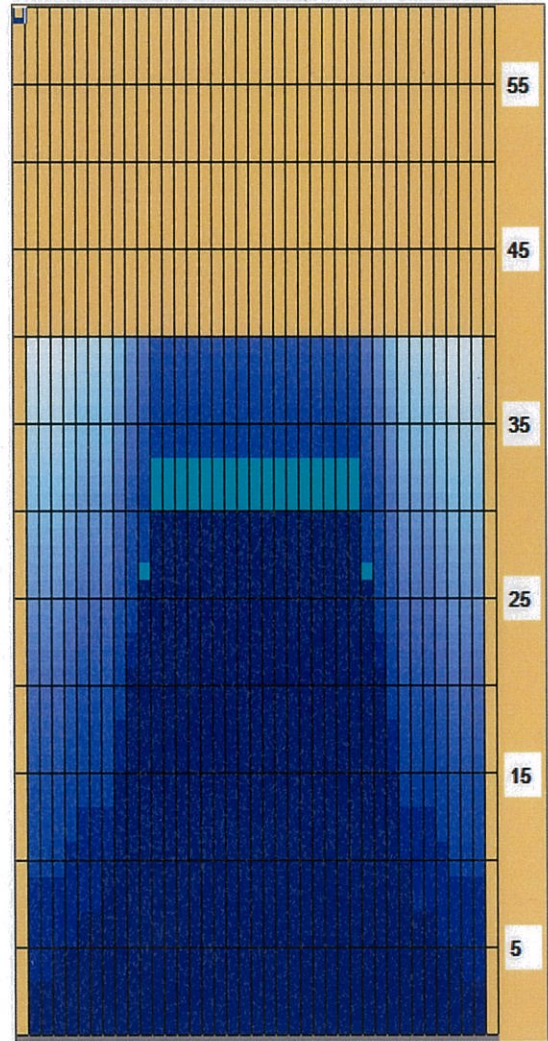
Reverse



Combined



Buff



Item	3L-7L:18L-18R	8L-12L:18L-18R	13L-17L:18L-18R	18L-18R:17R-13R	18L-18R:12R-8R	18L-18R:7R-3R
Description	Outside Track:Middle	Middle Track:Middle	Inside Track:Middle	Middle: Inside Track	Middle:Middle Track	Middle:Outside Track
Track Zone Ratio	3.71	1.4	1	1	1.4	3.71

